



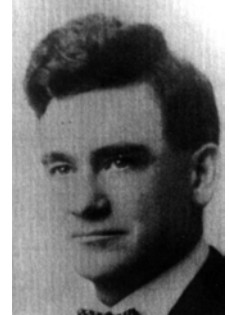
American Public Works Association
2345 Grand Boulevard, Suite 500, Kansas City, MO 64108-2625
Phone (816) 472-6100 • Fax (816) 472-1610
Web www.apwa.net • E-mail apwa@apwa.net

APWA Past Presidents

1937 Thomas Buckley, President APWA
Assistant Chief Engineer & Surveyor
City of Philadelphia
Philadelphia, Pennsylvania



Thomas Buckley



J. Eugene Root

1938 J. Eugene Root, President APWA
Director of Public Works
City of Cincinnati
Cincinnati, Ohio

1939 Guy Brown, President APWA
Engineer
City of St. Louis
St. Louis, Missouri



Guy Brown



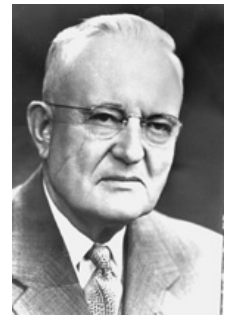
John S. Flockhart

1940 John S. Flockhart, President APWA
Principal Assistant Engineer
City of Newark
Newark, New Jersey

1941 Roy L. Phillips, President APWA
City Engineer
City of Meadville
Meadville, Pennsylvania



Roy L. Phillips



Frederick T. Paul

1942 Frederick T. Paul, President APWA
City Engineer
City of Minneapolis
Minneapolis, Minnesota

1943 Henry L. Howe, President APWA
City Engineer
City of Rochester
Rochester, New York



Henry L. Howe



Frederick R. Storrer

1944 Fredrick R. Storrer, President APWA
City Engineer
City of Dearborn
Dearborn, Michigan



American Public Works Association
2345 Grand Boulevard, Suite 500, Kansas City, MO 64108-2625
Phone (816) 472-6100 • Fax (816) 472-1610
Web www.apwa.net • E-mail apwa@apwa.net

APWA Past Presidents

1945 Stuart M. Weaver, President APWA
Chief, Repairs & Utilities Branch
U.S. Army Corps of Engineers
Washington, District of Columbia



Stuart M. Weaver

1946 Lloyd M. Johnson, President APWA
Commissioner of Streets & Electricity
City of Chicago
Chicago, Illinois



Lloyd M. Johnson

1947 Samuel S. Baxter, President APWA
Project Engineer
City of Philadelphia
Philadelphia, Pennsylvania



Samual S. Baxter

1948 James W. Morgan, President APWA
Commissioner of Public Improvements
City of Birmingham
Birmingham, Alabama



James W. Morgan

1949 William A. Xanten, President APWA
Superintendent - City Refuse Division
City of Washington
Washington, District of Columbia



William A Xanten